

Large and Small Dolls



The instructions are the same for both sizes.

Materials

Use a low pile fleece or knit for the doll and doll clothing.

15" of 60" wide fleece will make three large dolls.

(Remember to use a variety of skin tones when choosing the fabric color.)

8" of 60" wide fleece will make four small dolls.

The same amount is needed for the pajamas and outfits.

Black and white felt-optional for faces

Black and red embroidery floss for lashes and mouth

Acrylic paints for making the face-optional

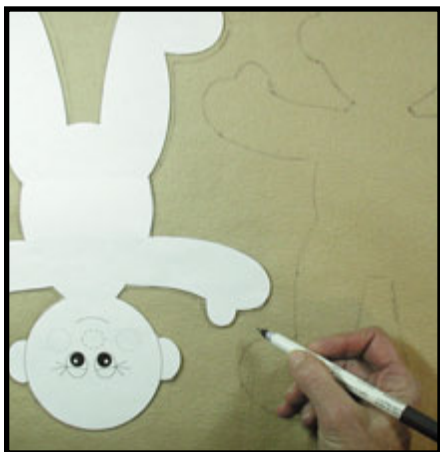
Yarn - one skein

Stuffing - one bag

ribbon/embellishment

velcro or snaps

colored pencil or crayon for blush



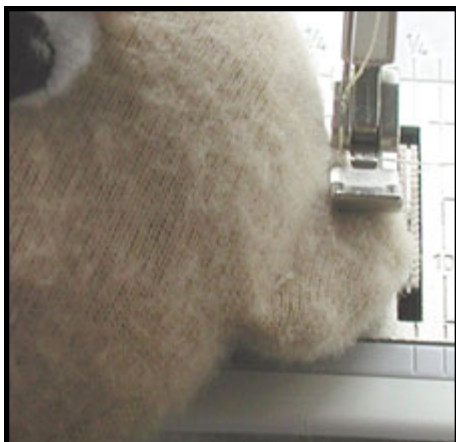
1 Copy the doll pattern onto cardstock and cut it out on the solid line. Tape the top and bottom pattern pieces together. Place the pattern onto two layers of fabric that are right sides together and mark the outline of the doll. The cardstock will allow many dolls to be marked quickly. Leave space between the marked dolls for 1/4" seam allowances.



2 Machine sew on the marked outline of the doll. Use smaller stitches and/or heavier thread to assure that the doll will hold together well. Leave the area between the legs open for turning right side out. After it is sewn, cut 1/4" outside the stitched line. The ears and thumbs are optional.



3 Turn the doll right side out and stuff so the shape of the doll is well defined. Hand whip stitch the opening closed.



4 Top stitch the edge of the ear. Using a zipper foot will help stitch close to the head.



5 To make the hair, wrap yarn several times around a piece of cardboard to make tufts that can be hand stitched to the head. Or, if you choose, make pigtails by centering 30" lengths of yarn on the back of the head. Stitch down the center. Tie and tack each side. Add tufts for bangs.



6 The tufts of yarn can be much shorter and stitched in a variety of styles. Paint, embroider or cut out felt shapes and whip stitch them in place for the face. Blush the cheeks with crayon or colored pencil. The smaller doll uses the pupils of the large doll eyes. French knots of white floss add spark.



7 The pajama pattern includes the seam allowances. After cutting the pieces out sew the seams marked by dashed lines on the pattern. Sew rolled hems on the edges of the sleeves, neck, and front closure. This is much easier if done before sewing the sides.



8 Place the sides together front and back. Overlapping the front closure. Sew the outer edge using 1/4" seam allowance. Zig zag the edges for a nice finish. Add velcro or snaps to close the front. Embellishments are optional for the front.

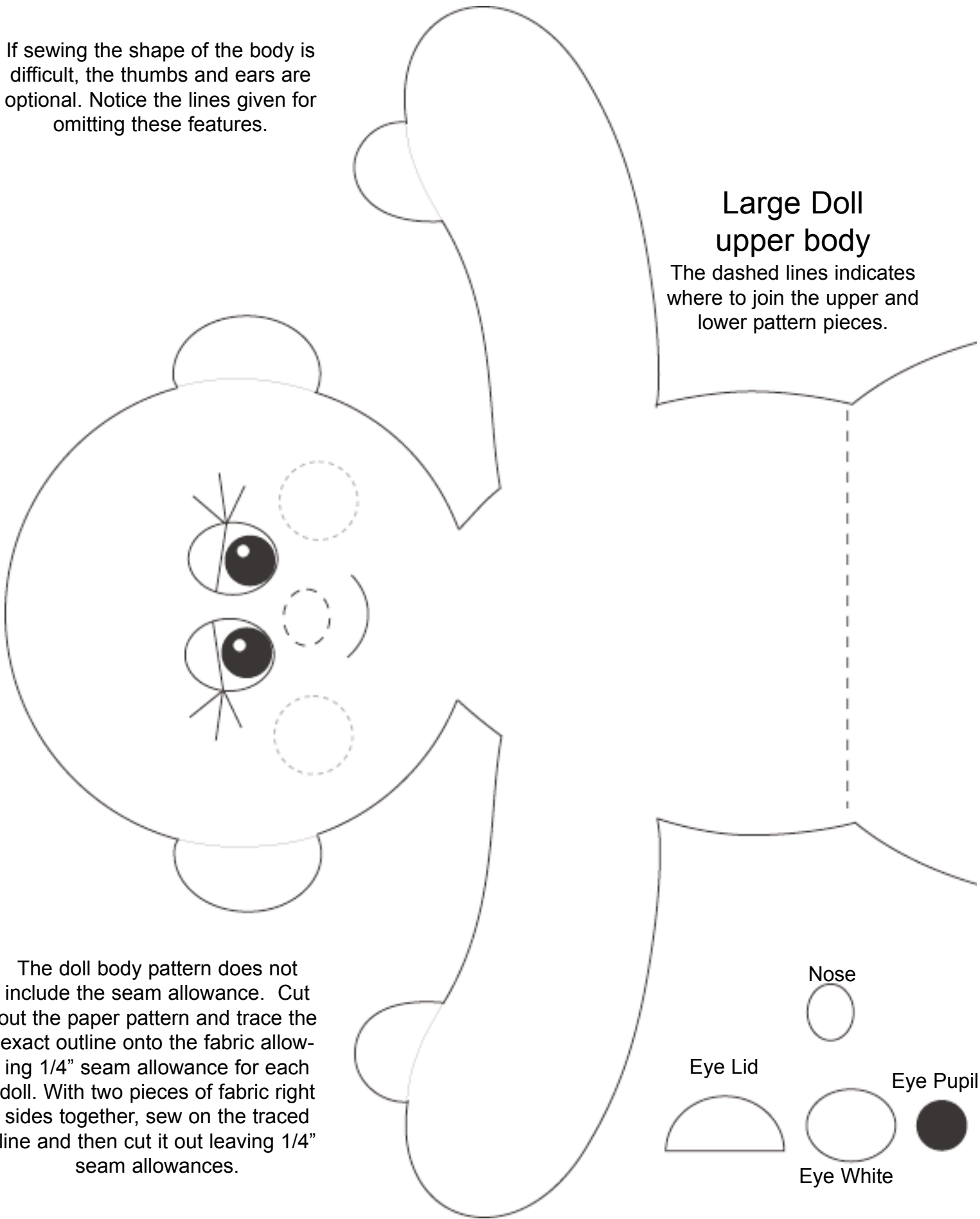


9 Fleece works well for the shirt and shorts option, as the edges do not need to be finished. Cut the pieces out following the instructions on whether to place the unit on the fold or how many to cut. Sew the side seams together, zig zag and they are finished.

If sewing the shape of the body is difficult, the thumbs and ears are optional. Notice the lines given for omitting these features.

Large Doll upper body

The dashed lines indicates where to join the upper and lower pattern pieces.



The doll body pattern does not include the seam allowance. Cut out the paper pattern and trace the exact outline onto the fabric allowing 1/4" seam allowance for each doll. With two pieces of fabric right sides together, sew on the traced line and then cut it out leaving 1/4" seam allowances.

Nose



Eye Lid



Eye Pupil



Eye White



Large Doll lower body

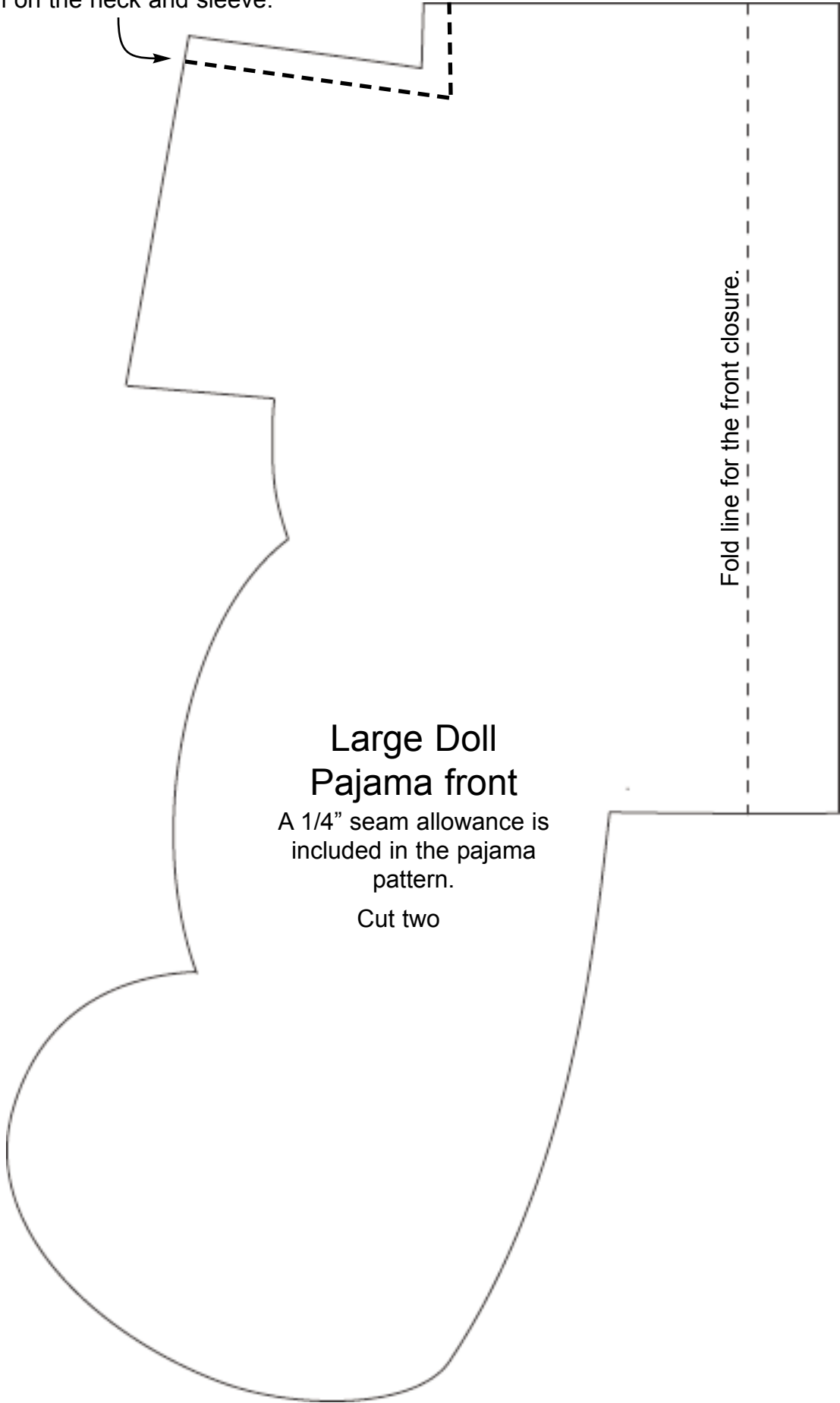
The dashed lines indicates
where to join the upper and
lower doll patterns.

Attach upper and lower doll pattern
matching at this dashed line. ↪

Leave open for turning
right side out.



When assembling the pajamas, sew this dashed line first before sewing the rolled hem on the neck and sleeve.



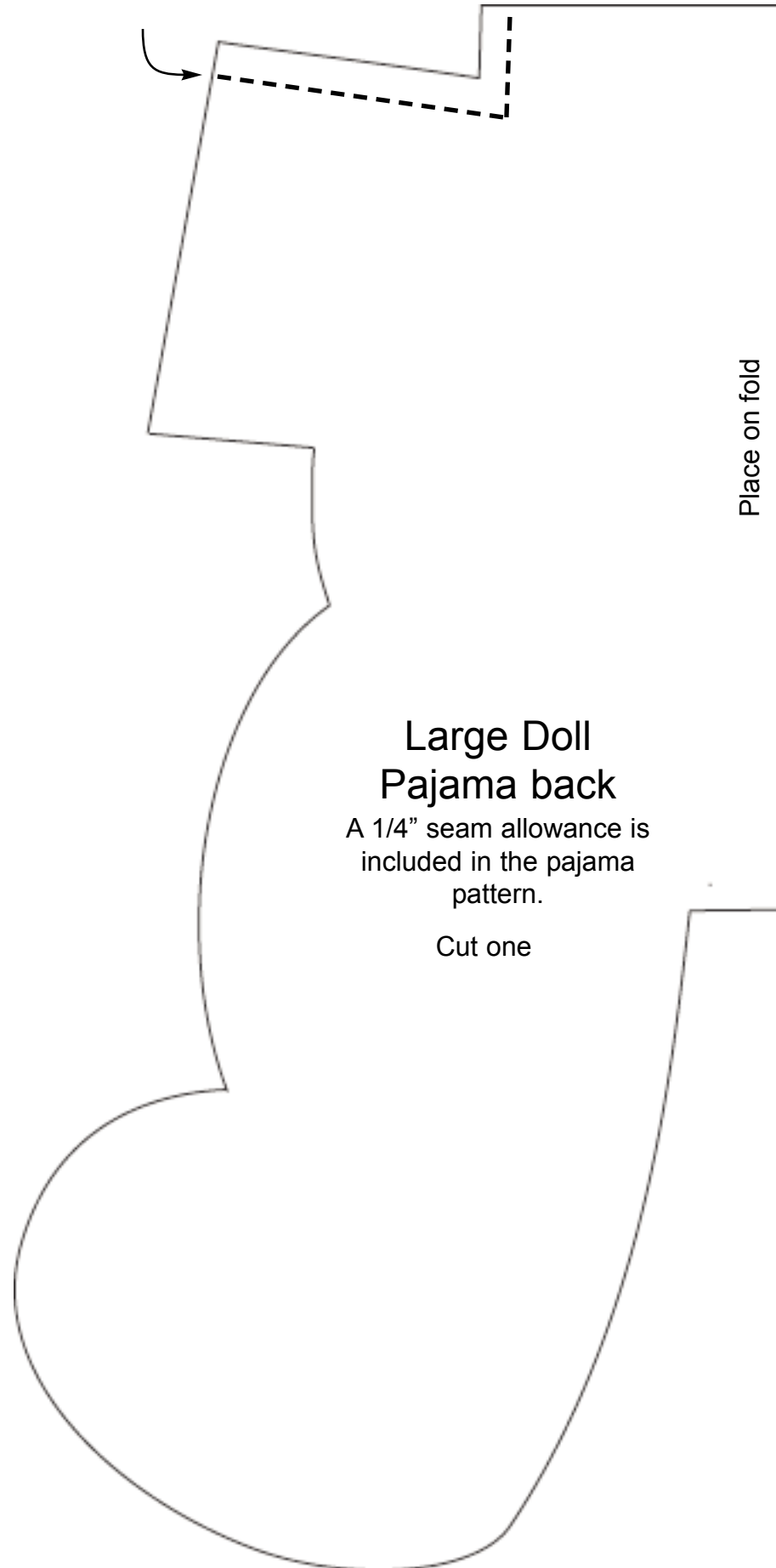
**Large Doll
Pajama front**

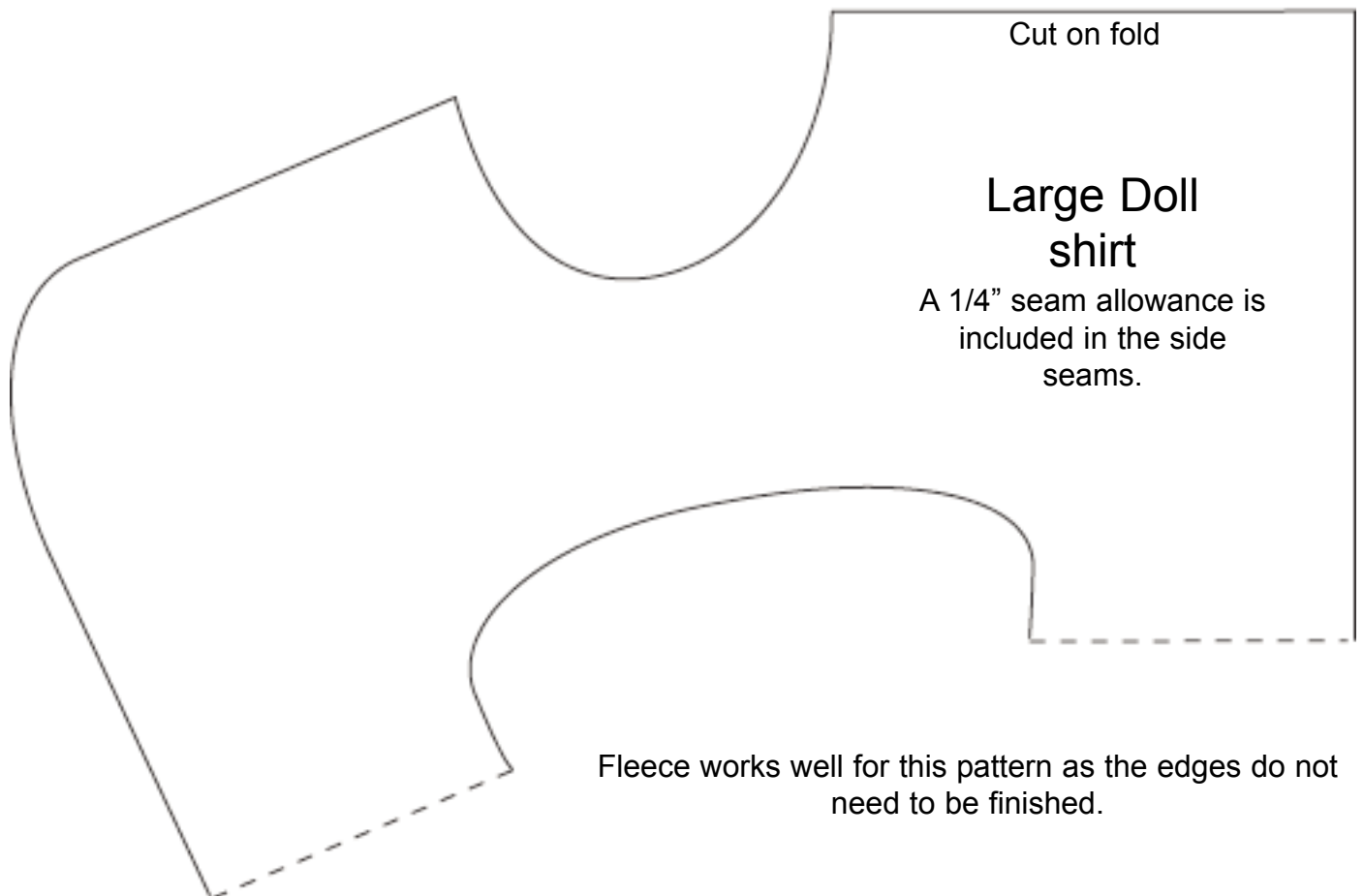
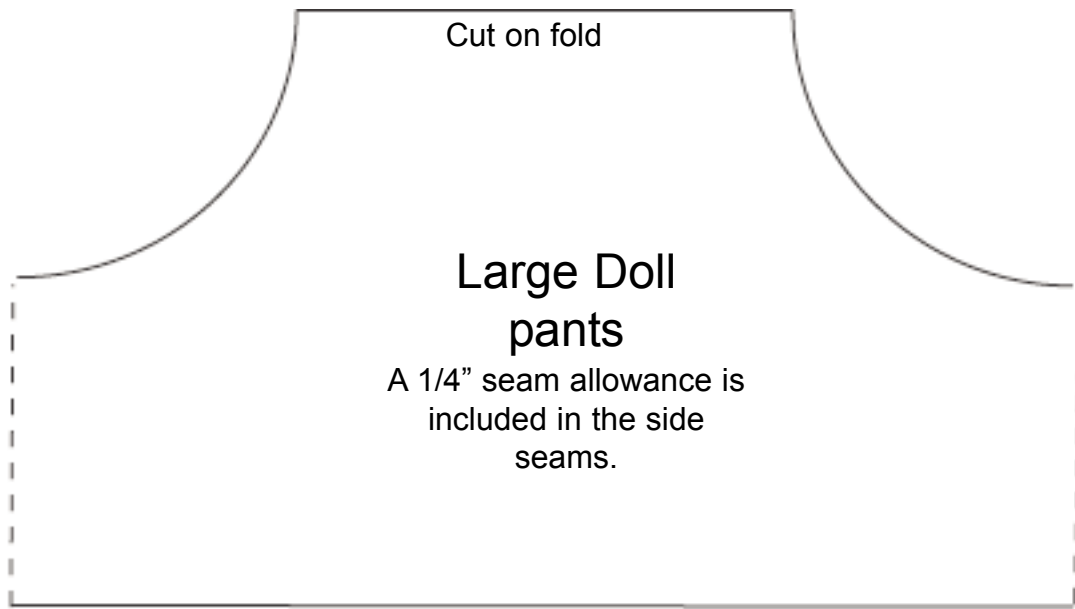
A 1/4" seam allowance is
included in the pajama
pattern.

Cut two

Fold line for the front closure.

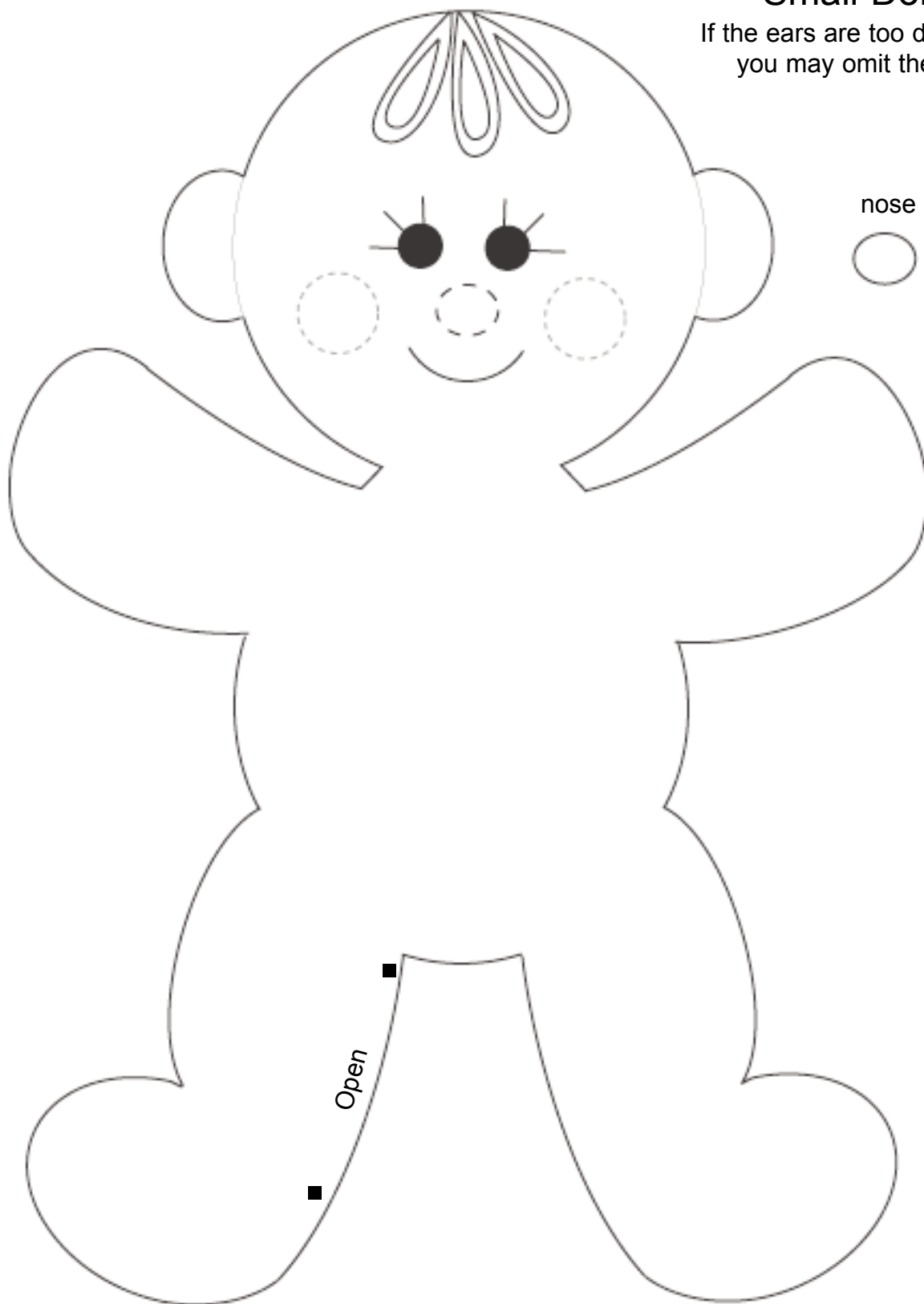
When assembling the pajamas, sew this dashed line first before sewing the rolled hem on the neck and sleeve.



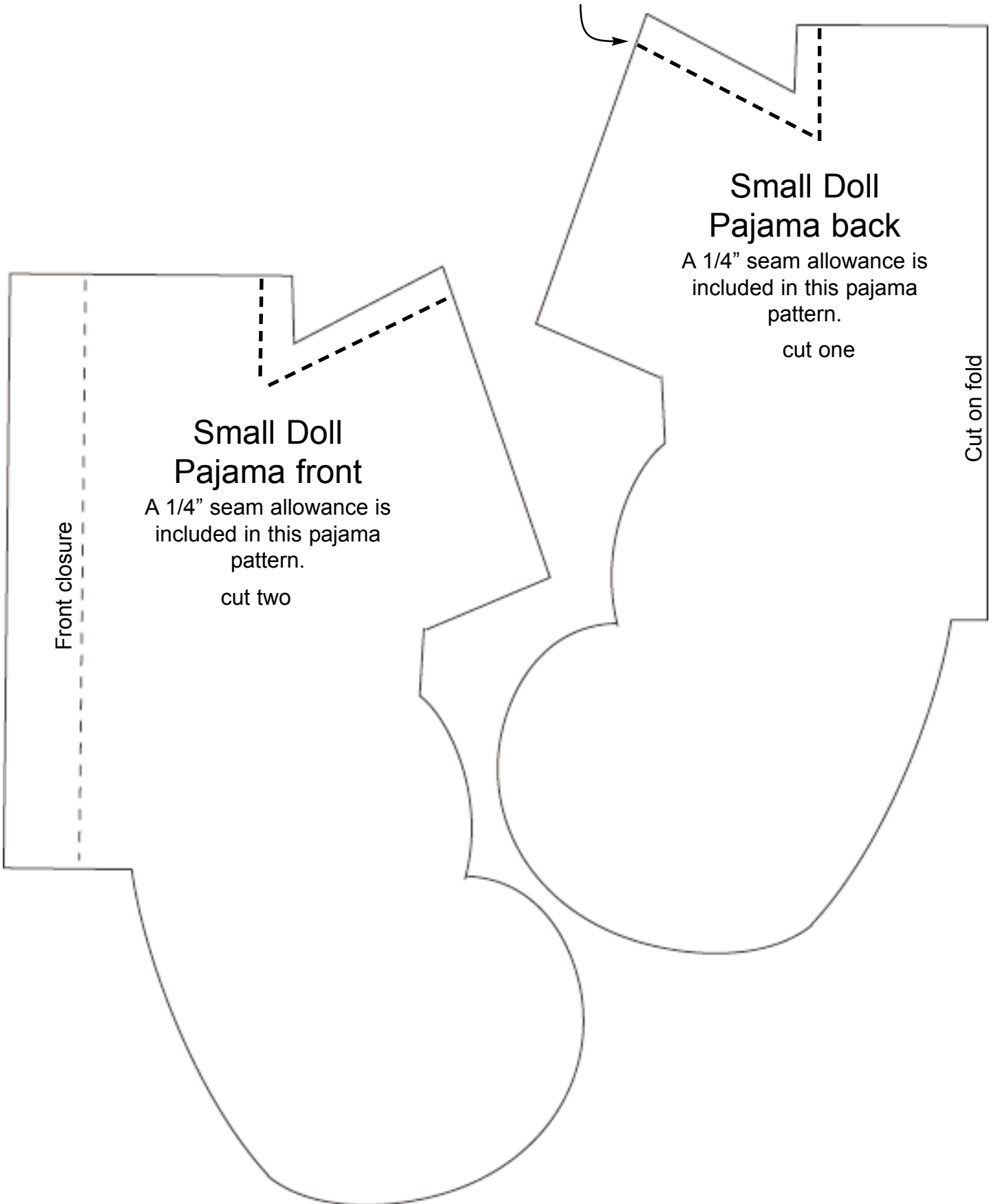


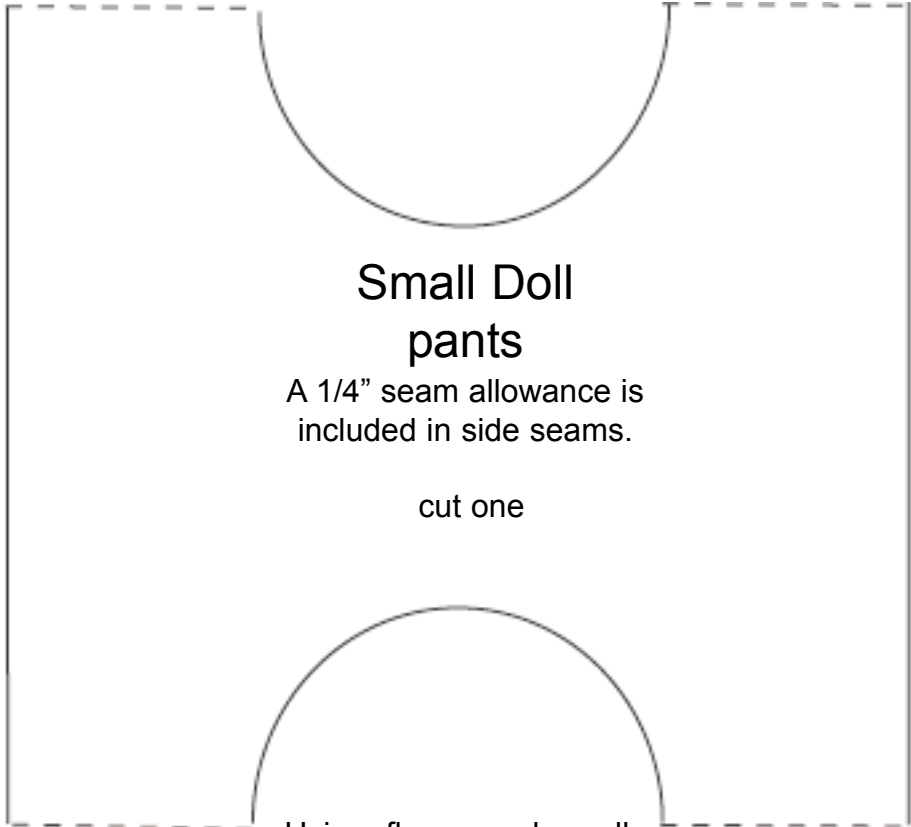
Small Doll

If the ears are too difficult,
you may omit them.



When assembling the pajamas, sew these dashed lines first before sewing the rolled hem on the neck and sleeve.





A pattern for small doll pants. It consists of a rectangular piece with a semi-circular waistband at the top. Dashed lines indicate the outer edges and the waistband curve.

Small Doll pants

A 1/4" seam allowance is
included in side seams.

cut one

Using fleece works well
for this pattern as the
edges do not need to
be finished.



A pattern for a small doll shirt. It features a wide, curved neckline, a central circular opening for the head, and two large, rounded armholes. Dashed lines indicate the outer edges and the armhole curves.

Small Doll shirt

A 1/4" seam allowance is
included in side seams.

cut one