

Beaver Ridge Recreational Property Directions

Overview from Salt Lake City



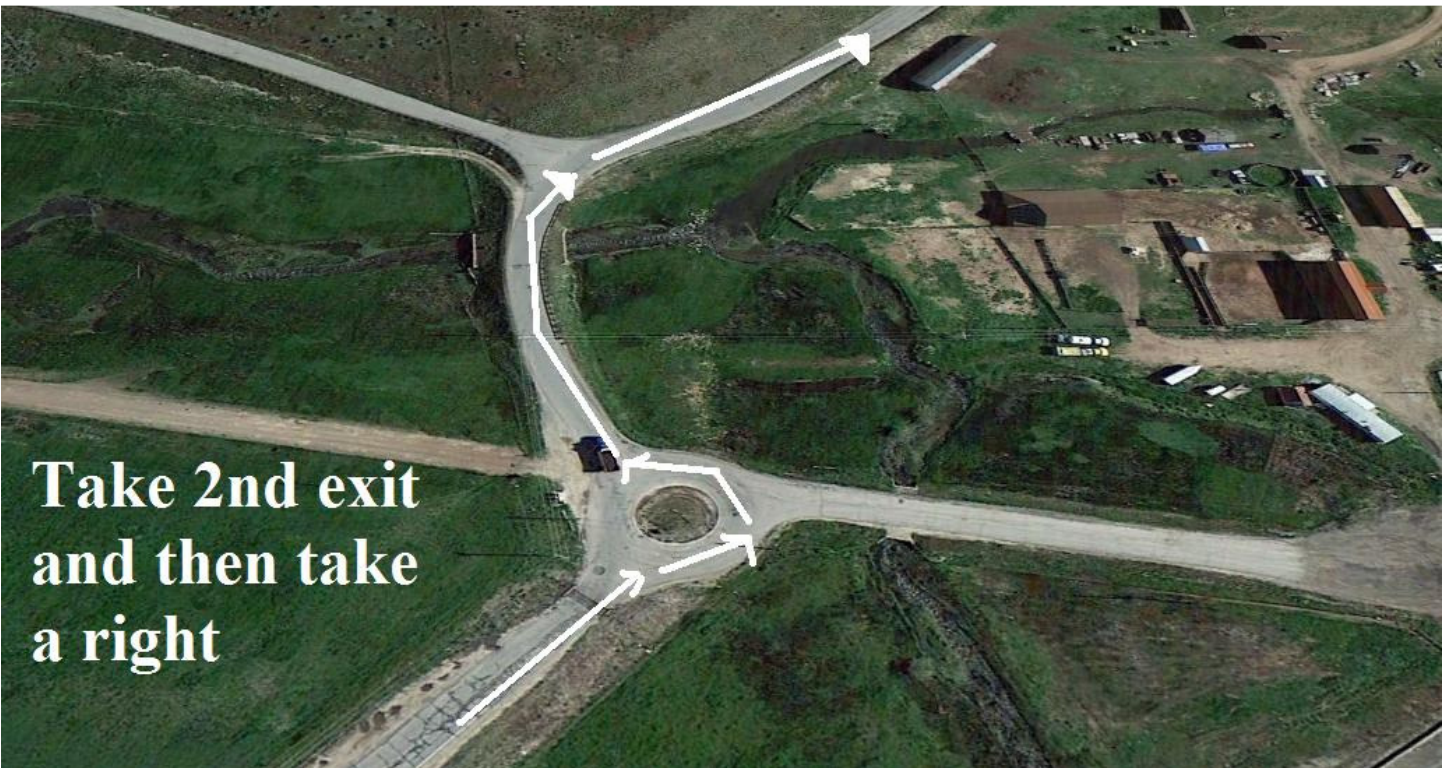
1. Take I-80 to the Kimball Junction exit (Exit 145) and stay to the left.



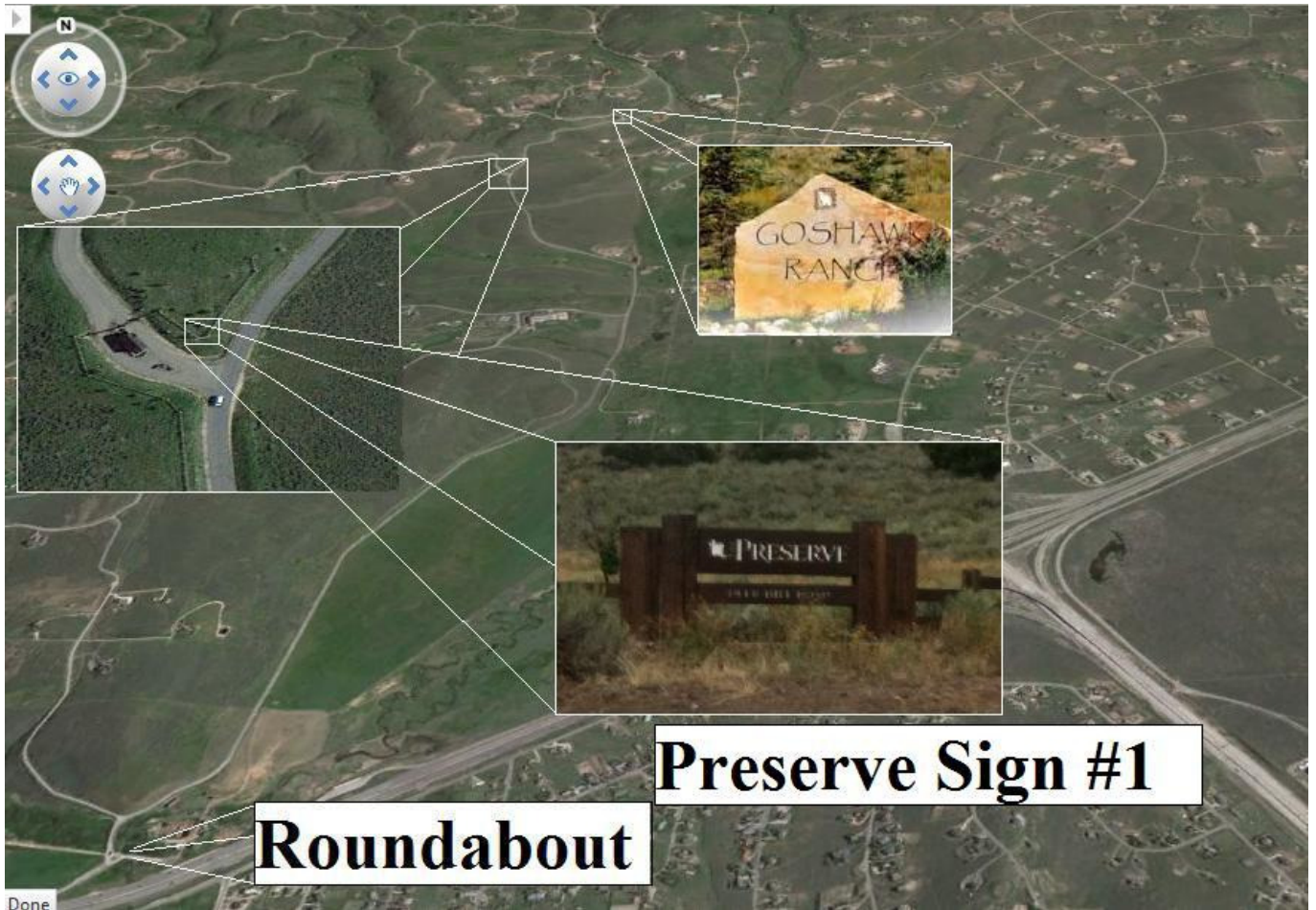
2. Exit left and then keep right of the median and turn right onto the frontage road



3. Continue on the frontage road about 1.5 miles until you reach the Roundabout. Take the 2nd exit in the roundabout and keep right onto Bitner Ranch Road as shown below.



4. From the Roundabout continue 2.3 miles and you should see the first of the two “Preserve” Signs. This is Preserve Sign #1. Continue 0.4 miles until you see the Goshawk Ranch marker also on your left.



5. From the Goshawk Ranch marker continue 0.8 miles until you get to Preserve Sign #2, also on your left.



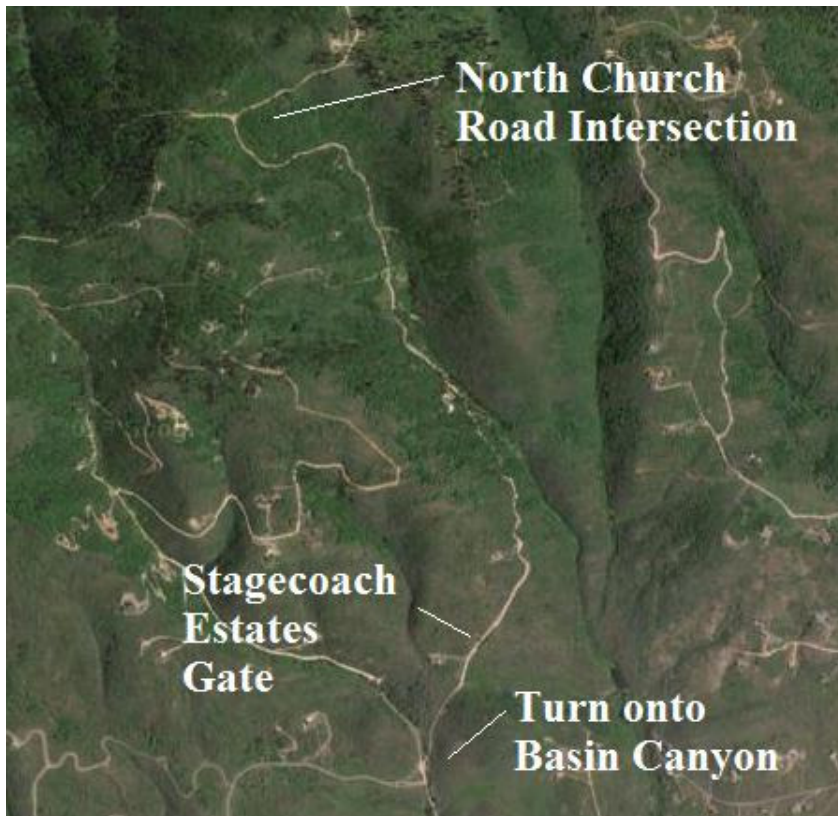
6. A few hundred feet past Preserve Sign #2 you will see the road sign. Turn right onto Basin Canyon Road.



7. Continue 0.3 miles until you reach the Stagecoach Estates Gate. The keypad opens the gate.



8. Continue 1.7 miles until you get to the North Church Road intersection.



9. Take a right onto North Church Road.



10. Continue 0.9 miles until you get to the Bitner Property Gate. Check with your event coordinator for the key box combination. When I came the key box I needed had a ribbon tied to it.



11. Continue 0.4 miles until you see a white house on your left.



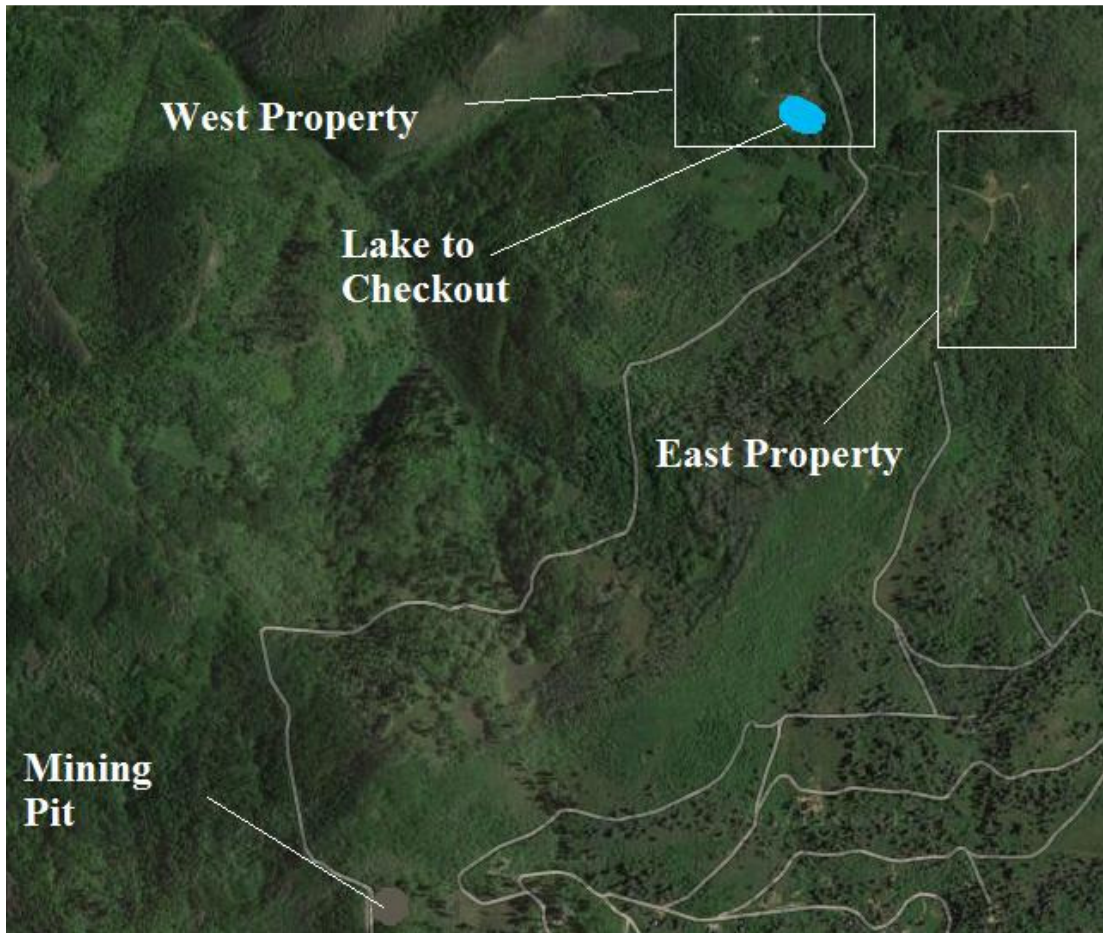
12. From the white house, continue on until you see what looks like a mining pit off to the right.



13. Mining Pit



14. Continue to the Campground Property Sign. Go Right to EAST property. Go Left to WEST property.



15. Beaver Ridge Property Sign. Enjoy and Be Safe!



If you have something you would like to add to these directions, please email ojhurst@gmail.com