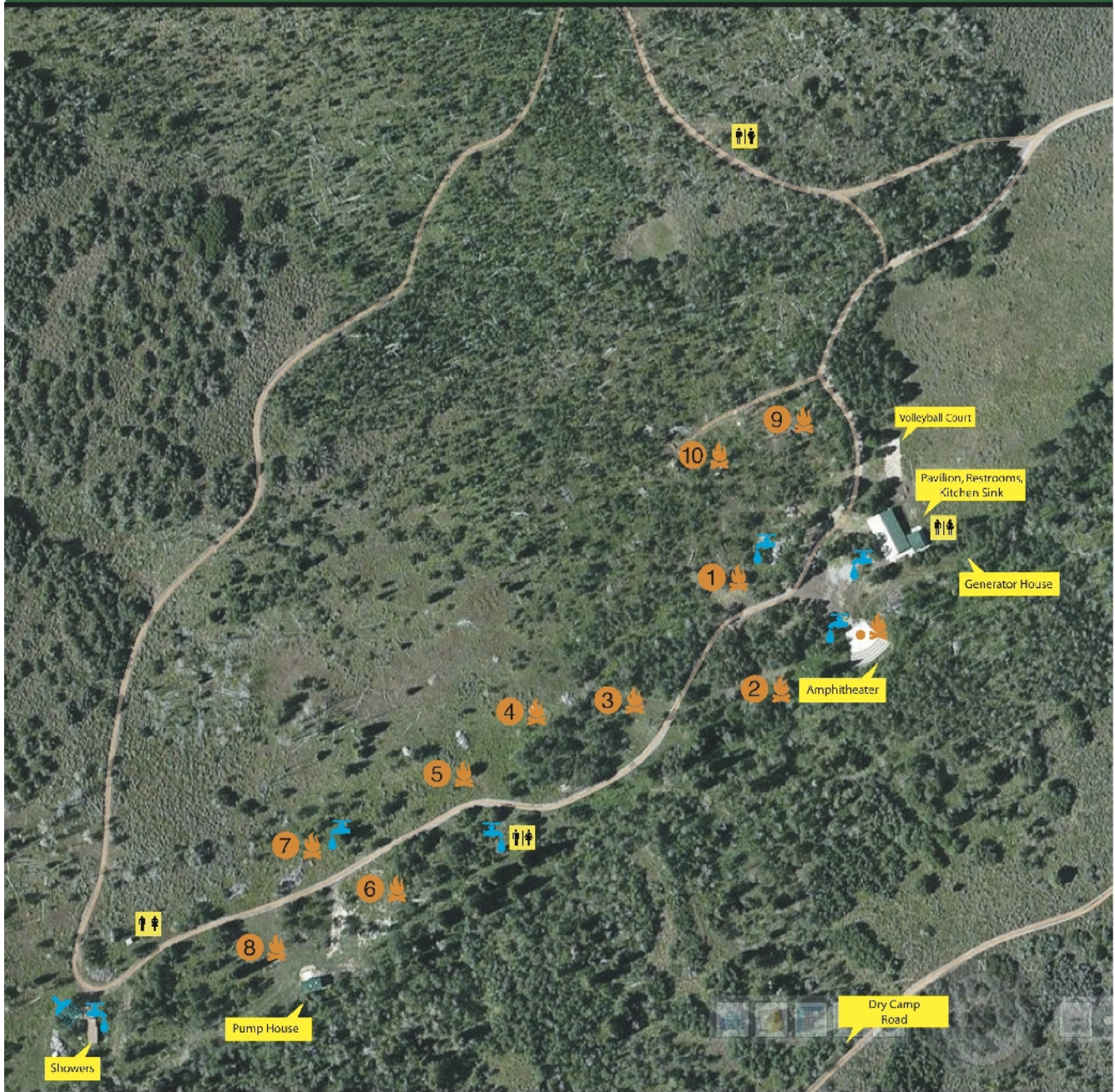


Sugar House Recreation Property

Assigned Stakes: Copperhill , Granger East, Sugar House, Wells, & Westbrook



 Water Spigot

 Showers

 Camp Site & Fire Ring

 Latrine/Toilet

Property Description

The Sugar House Recreation Camp is situated at the altitude of 7700 feet among Aspen trees with some fir trees. The priority focus of the camp is to provide camping for the young women of the church.

Our private roads are well maintained dirt and gravel and allow access of camping trailers to the Wet Camp. There are two main divisions to the camp. The more developed camp is called the “Wet Camp” because it has running drinking water from our own well. The less developed part to the property is called the “Dry Camp”.

The “Dry Camp” has no running water and only one pit toilet. It is separated from the “Wet Camp” by a mountain ridge and is accessed by a separate road once on the property. It is entirely secluded and separate from the Wet Camp which allows for Boy Scouts or others to use it at the same time the Wet Camp is being used by young women. It is rustic with open camping areas with Aspen trees. Water can be carried from the Wet Camp only by leaders communicating and cooperating with the leaders who are using the Wet Camp.

Wet Camp Facilities (Capacity 200)*

- Running Water
- Pavilion with 16 Aluminum Picnic Tables
- 3 Flush Toilets at the pavilion
- 5 Pit Toilets
- Hand-Wash Station
- Electrical Generator for evening lighting
- Amphitheater with Fire Pit and Flag Pole
- 10 Camp Sites each with Concrete Fire Pits & Two 8 foot Metal Picnic Tables
- 3 Showers Stalls with hot water at Shower House
- Dutch Oven Table made of steel 36 inches square
- Volleyball Court with Balls & Net provided
- Movie Screen Panel in Pavilion
- Electrical Outlets for Audio/Video Equipment (not for cooking appliances)

Dry Camp Facilities (Capacity 25)*

- 1 Pit Toilet
- Capacity is determined by one toilet per 25 persons. Actual number persons per camp site is flexible.

RULES & INSTRUCTIONS

Users of the Dry Camp cannot use the facilities of the wet camp. The only exception is for adult leaders of the Dry Camp to meet with adult leaders of the Wet Camp to get water to take back to the Dry Camp.

The camp is open for reservations from mid-May through mid-September.

Reservation Fees are not refundable less than 60 days before the reservation date.

Check-In 7:00 A.M. (flexible)

Check-Out 1:00 P.M. (flexible)

TABLES in the Pavilion

After using the tables for your activity chain and lock the tables to the steel post as shown. **MAKE SURE THE TABLES ARE TIGHTLY CHAINED** to the posts to prevent movement in the wind.



PAVILION ELECTRICAL GENERATOR

The generator should **ONLY BE RUN A FEW HOURS** in the evenings for lighting or audio/video equipment. It does not have the capacity to power cooking appliances.

*Running for long periods of time or cooking appliances will damage the generator!
Repairs will be the responsibility of the Stake or Ward or Campers who caused the damage.*

The generator house is located east of the pavilion. It supplies electrical power for pavilion lights and hot water heater. Mounted on the outside of the generator house is an electrical control box for attaching a portable generator if desired, instead of using the inside generator. Instructions are located inside near the generator.

GENERATOR INSTRUCTIONS

- Turn on the propane at the outdoor 500 gallon propane tank by lifting the cover on top and opening the silver colored valve (by turning counter clockwise).



Open the green handled valve inside the generator house, by turning the handle parallel to the pipe as shown in the photo.

On the front panel of the generator—Push and hold **START/RUN/STOP** switch in **START** position until the engine starts and the **RED LIGHT** comes on. (The red light is right above the start switch)

IMPORTANT: If you release the switch from the **START** position before **LED** comes on, the generator will shut down.

CAUTION: DO NOT crank the engine for more than 15 seconds. If it doesn't start after 15 seconds, pause for 15 seconds to reduce heat in the starter. Repeat process until engine starts. CONT.



Once the Generator is running check the main transfer switch-breaker panel on the outside wall to make sure the breaker labelled “INSIDE GENERATOR”: is in the on position. If not set the switches as shown in the picture below.



Open the breaker panel by lifting up on the latch as shown and opening the cover.



Optional Use a PORTABLE GENERATOR To Supply Power to the System (Instead of the Inside Generator)



Plug the portable generator into the external outlet to the left of the breaker box using the twist lock cord stored inside.

Start the portable generator and then transfer the power in the transfer switch breaker panel by setting the switches as shown in the picture below.



PAVILION BUILDING



Pavilion Restrooms

Flush Restrooms are located in the building by the pavilion on the north side.

Pavilion Storage Room

Located on the west side of the restroom by the pavilion and stores:

- Toilet Tissue
- Cleaning Chemicals
- Brooms, Mop & Bucket, Toilet Brushes
- Hoses



Pavilion Wash Stations

are located on the south side of the building behind the overhead door.



CAUTION:

Engage the overhead door locks after opening the door to prevent the door from closing unexpectedly.

SERVICE PROJECTS

Service by camp users is encouraged.

One continuous need is control of Thistle and Stinging Nettle plants wherever found.

And general weed control around the amphitheater, pavilion, water spigots, and fire rings.

This is best done by cutting off plants at ground level with a shovel, then bagging or burning seed heads (thistle).



Thistle has sharp spiny leaves and purple blooms.

Stinging Nettle (below) has smaller finer toxic spines and gives a person who touches it a irritating rash.



PRE-DEPARTURE CHECKLIST

CLEAN

- Restrooms & Latrines
- Pavilion Sinks & Counter
- Pavilion Concrete (use brooms or hoses)
- Haul out your trash
- Remove Ashes from Dutch Oven Table to Fire Pit.

POWER DOWN

- Turn OFF propane to pavilion generator.
- Turn OFF propane to Shower House.
- PUT OUT ALL CAMP FIRES!**
(If it's not safe to touch it's not out)
- Make sure the Electrical Generator is OFF.
- Make sure Shower House Water Heater is OFF.

LOCK UP

- Stand, Chain & Padlock Pavilion Tables
tightly against the post.
- Pavilion Toilets Doors
- Pavilion Storage Door
- Pavilion Wash Station Overhead Door
- Generator Building Door
- Shower House Door
- Shower Water Heater Door
- Close Latrine Doors

DRIVING DIRECTIONS—SUGARHOUSE RECREATION PROPERTY

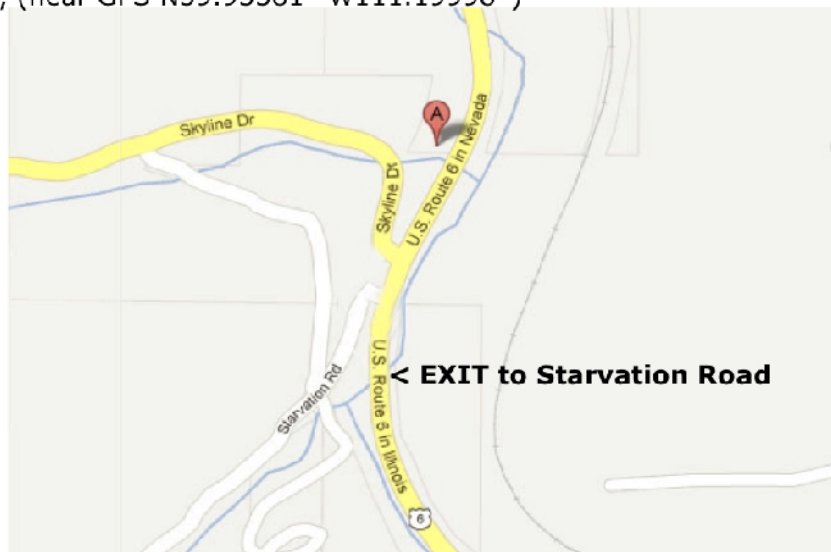
Total travel time is 2 hours.

Travel South on I-15

Take the **Exit** "East, Spanish Fork Main Street / Price" (Highway 6).
Pass through Spanish Fork staying on Highway 6 eastbound up the Spanish Fork Canyon **32 miles**.

When you see a rest stop on the north side of highway 6 you are 1.7 miles from the next exit. The next **SIGN** will say [Skyline Drive Skyline Drive NEXT RIGHT/ Starvation Rd 2ND RIGHT]

Immediately **AFTER PASSING** the Skyline Drive Exit take the **Starvation Road EXIT on right**, (near GPS N39.93381° W111.19998°)



Traveling the **Starvation Road 4.8 miles** after leaving highway 6 you will see a **SIGN** [**<—SUGAR HOUSE RECREATION PROPERTY**], **STAY LEFT** (don't take Mapleton Camp Road).

At **7.7 miles; SIGN** [**—> SUGAR HOUSE RECREATION PROPERTY —>**], **TURN RIGHT** and **follow signs to the Camps**.

The next sign will say

[**SUGARHOUSE RECREATION PROP.**]
[**<— DRY CAMP • WET CAMP —>**]

The "Dry Camp" (without water) Wet Camp is the Main Camp with water.

Wet Camp GPS Coordinates: n39.84017, w111.20460