

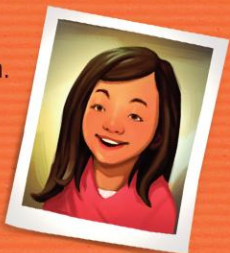
P.S.

We hope you enjoyed this month's magazine. Please write to tell us what you liked!

## How to Write to the Friend

To send us a letter, drawing, poem, or photograph . . .

1. Fill out the form below and include it with your submission.
2. Include a school photo or high-quality snapshot.
3. We might edit your submission for length or clarity, and we can't return it to you.
4. You must be at least three years old to send us a submission.



ILLUSTRATIONS BY ANDREW BOSLEY

**Please send your submission to:** **Friend Magazine**  
50 E. North Temple St., Rm. 2432  
Salt Lake City, UT 84150-0024  
Or email: [friend@ldschurch.org](mailto:friend@ldschurch.org)

**The following information and permission must be included:**

First and last name

Age State/Province, Country

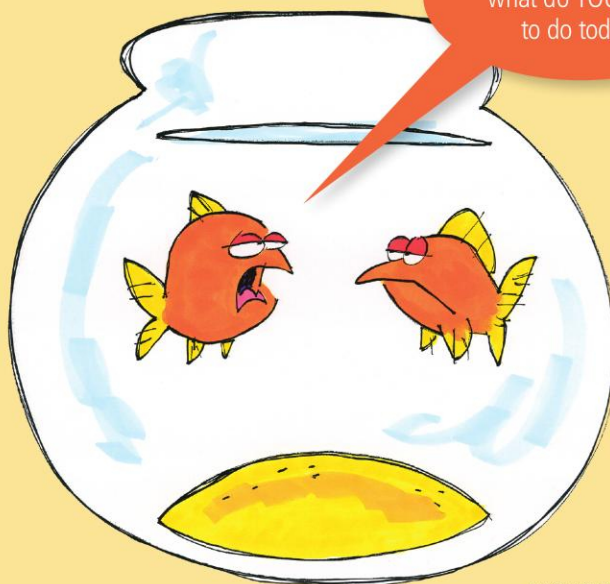
**I agree to the terms of the Friend Submission Agreement ([lds.org/friend/parentalconsent](http://lds.org/friend/parentalconsent)) and grant permission for the Friend to publish my child's submission and photo in print or online.**

Signature of parent or legal guardian

Email of parent or legal guardian

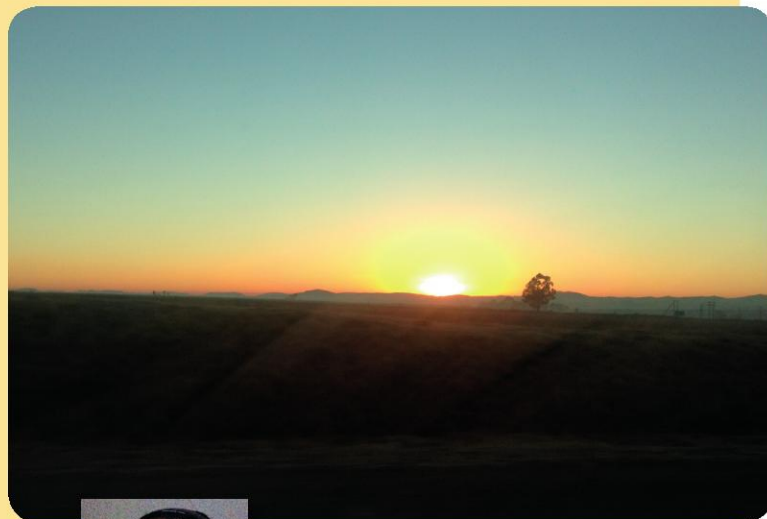
## The Last Laugh

I don't know...  
what do YOU want  
to do today?



VAL CHADWICK BAGLEY

## Through Your Eyes



Heavenly Father has blessed all our lives  
by giving us beautiful sunrises every  
morning to greet us.

**Nkateko M., age 12,**  
**Gauteng, South Africa**



**VISIT**  
**[friend.lds.org](http://friend.lds.org)!**

- Play games and watch videos.
- Read the *Friend* online.

### Funstuf Answers

Page 10: **Pioneer Puzzler:** A (John Wood, an early Church member, brought this candy mold from his shop in England when he came to Salt Lake in 1855.) **Friendly Fractions:** missionaries

### Hidden CTR Ring

Did you find the ring?  
Look on page 17!

