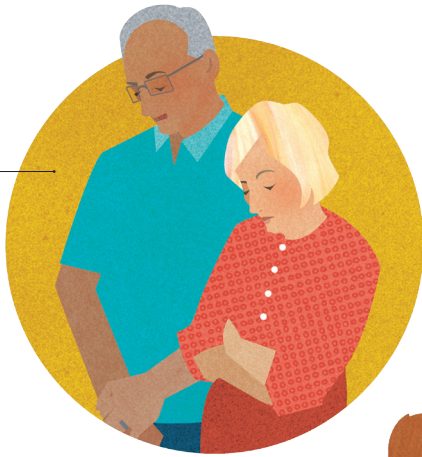


**Booki aika tabu ao burabeti a reireiniira kawai ake ti kona n tarai bwaai n tamaroia:**



*Te kimwareirei ae bwanin ae koaua e roko rinanon te Atua (taraa D&C 101:36). Ngkana ti rairaki nako Ina, nanora a na bitaki.*



*Te Atua e kakabwai maiura n tatabemaniira nako (taraa Taian Areru 145:9). Ti kona n teimatoa n ataa Ana nanoanga inanon maiura.*

*Ni kateimatoai ara taratara iaon te Atua tiaki tii teuana taina n riki. Ti riai ni karaoa ao n teimatoa ni kawakin berita aika tabu, n arora n tau ni kanakin te toa ni katoa wiiki.*



*Ngaira, n aron Nibwaai, ti kona ni kakukureira ni booki aika tabu (2 Nibwaaii 4:15–16). Warekan ana taeka te Atua ao Ana burabeti e na karikirakei nanora.*



*Beretitenti Gordon B. Hinckley (1910–2008) e kaungaira bwa ti na “taekina raoiroin temanna ma temanna nakon are ti na taekina kairuan temanna” ao n “tituaraoi riki n taekina te raoiroi ao te konabwai.”<sup>4</sup>*