

O Mau o le Masina Lenei:

A uma ona e faitaua se fuitau o mau, ona valivali lea o vaega o fuainumera e tutusa i luga o le ata!

1 3 Nifae 12:1–9, 16

3 3 Nifae 13:6–8, 19–21

5 3 Nifae 18:19–21, 24

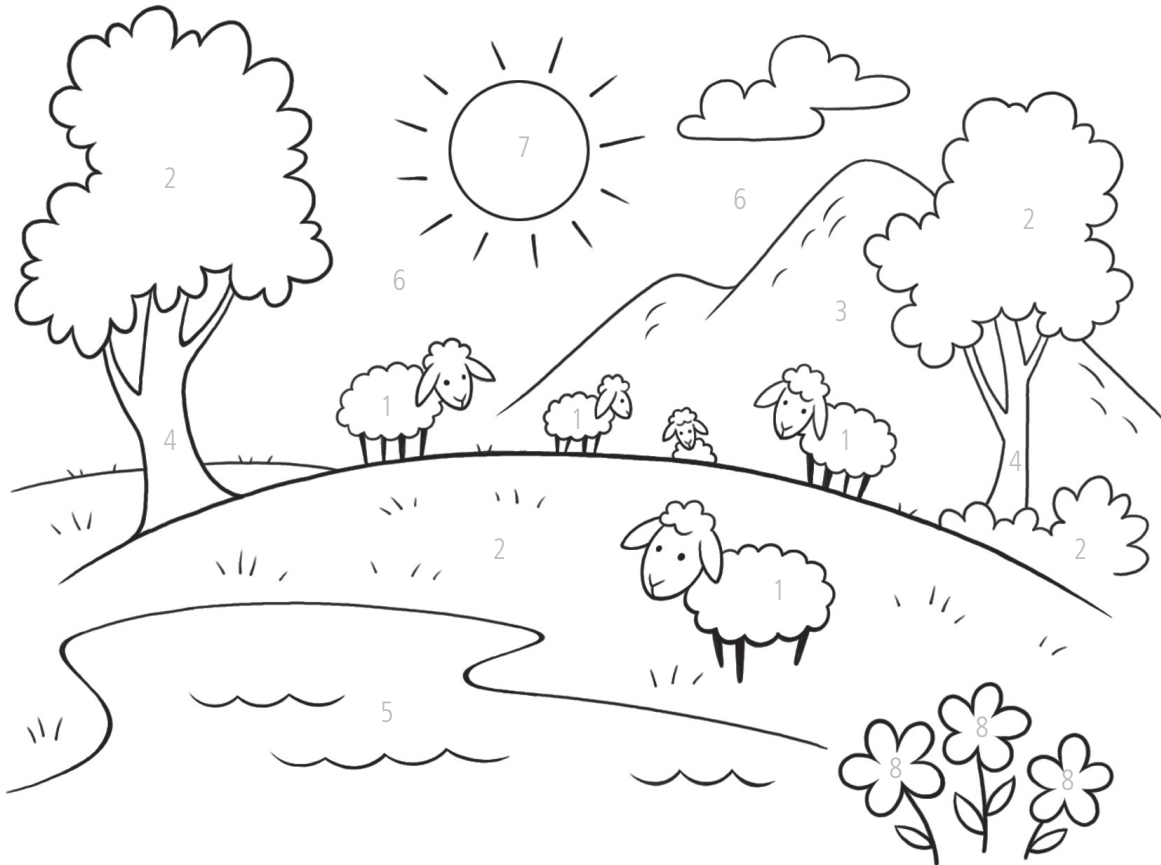
7 3 Nifae 19:11–26

2 3 Nifae 12:19–20, 44, 48

4 3 Nifae 18:1–12

6 3 Nifae 18:35–39

8 3 Nifae 20:1, 29–31



ITU TALUMATAU: ATA NA TUSIA E JARED BECKSTRAND, LALO: KERISO O LEO FAAMANUJA FA'AU A SA NIFAE, SAUNIA E TED HENNINGER



Isi Mamoe

Ao aoao atu Iesu i Ierusalema, na Ia tau atu i tagata faapea o Aloo i ai ia te Ia “isi mamoe” na Ia manaomia e aoao (tagai Ioane 10:16). Na fetalai o Ia e uiga i sa Nifae ma tagata i isi lauele-ele. Ina ua mavae Lona Toetu mai, na asiasi atu Iesu ma aoao sa Nifae. E mafai ona e aoao atili e uiga i Lana asiasiga i itulau 76-78. Ma vaavaai mo le isi lu’i o le faitauga i le lomiga e sosoo ai! ■