

# Ol Dia Papa mo Mama,

Samtaem mifala i no agri wetem ol nara pipol. Be, yumi save lavem olgeta yet. Yumi save holemtaet wanem we yumi save se i tru tu. Ridim stori long pej F10 wetem ol pikinini blong yu mo askem ol kwestin ia:

?Olsem wanem famli blong Ellie i soem lav?

?Olsem wanem famli blong Ellie i kipim fet blong olgeta i strong?

?Olsem wanem nao famli blong yumi i save soem lav long ol nara man, nomata taem yumi no agri?

!Yumi evriwan i defren, be evri man i wan pikinini blong God!

Serem lav,

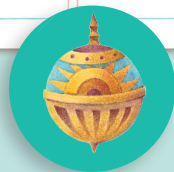
*Fren*

## **OLSEM WANEM BLONG SENDEM OL WOK BLONG ART BLONG PIKININI BLONG YU O EKSPERIENS I GO LONG LIAHONA**

Go long liahona.ChurchofJesusChrist.org mo klik long "Submit an Article or Feedback." O sendem imel i kam long mifala long liahona@ChurchofJesusChrist.org tugeta wetem nem blong pikinini blong yu, yia blong hem, siti we yu stap long hem, mo toktok ia we i givim raet: "Mi, [putum nem blong yu], givim raet long Jos Ia blong Jisas Kraes blong Ol Lata-dei Sent blong yusum wok blong pikinini blong mi long ol magasin blong Jos, long ol Websaet blong Jos, mo long ol sosol media, mo long ol nara buk blong Jos." !Mifala i no save wet blong harem yufala!

## **OL SAMTING WE OLI STAP INSAED**

- F2** I Kam long Fas Presidensi: Stap Folem Ol Paeonia
- F4** Joes blong Lila
- F6** !Halo i Kam long Ajentina!
- F8** Smol Kat blong Bred
- F10** Defren be Tugeta
- F12** Fet blong Mi We I Stap Gro
- F14** Fren I Go long Fren: Sikret Ingridien
- F15** Gudfala Tingting
- F16** Ol Eksampol We I Soem Strong Paaa long Tingting: Sapaes Misin Kol
- F18** ?Wanem Nao I Stap long Maen blong Yu?
- F19** Naes Pleiplei: Smol mo Simpol Pasol
- F20** Ol Skripja Stori: Yangfala Alma I Sakem Sin
- F23** Pej blong Kala: Alma I Bin Sakem Sin mo Folem Jisas



**!Faenem Liahona we i haed i stap insaed!**

**I STAP LONG FREN KOVA**  
Ol pikja droing oli kam long Rebecca Sorge Jensen