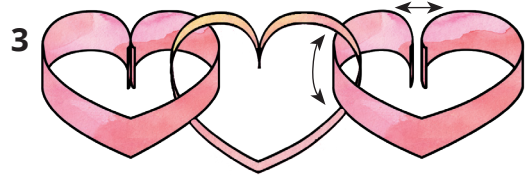
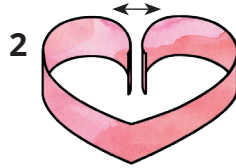
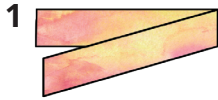


## Tuputupu a'e i le Alofa

Oti ese ni fasipepa ma tuu i totonu o se apa.  
A uma ona outou faia se tasi o gaoioiga,  
faaopoopo se sooga o lau filifili o fatu.

1. Gagau faaafa le fasipepa.
2. Gagau faatasi pito o le pepa ia foliga ai e pei o se fatu. Faapine pe faapipii faatasi.
3. Ina ia faia se filifili, faapi'o pito o le isi fatu i totonu o le fatu muamua a o lei faapineina faatasi.



**FESILI PO O LE A SE MEA E MAFAI  
ONA E FAIA E FESOASOANI AI.**

**TALANOA E UIGA I SE MANATUAGA MALIE.**

**TATALO MO SE TASI O LOU AIGA.**

**TUSI SE FAAUPUGA ALOFA I SE TASI.**

**FESILI I SE TASI PE NA A MAI LONA ASO.**

**AVATU SE MEAINU PO O SINA MEEAI MĀMĀ.**

**FAI ATU I SE TASI E TAUA I LATOU IA TE OE.**

**FAI SE TAALOGA PE SAVALIVALI FAATASI.**

**FAI ATU, "MALIE LOU LOTO," PE A MANAOMIA  
ONA E FAIA.**



O le a se mea e mafai ona e faia e fesoasoani ai i lou aiga ia lagonaina atili le alofa?