

2018–2019 Winter Concert Series

VENUE LEGEND

AH Assembly Hall

CC Conference Center

JSMB Joseph Smith Memorial Building

CCT Conference Center Theater

TAB Tabernacle

Unless otherwise noted, concerts are free and open to the public ages eight and older. BYU Winterfest performances are open to the public ages two and older. Tickets are not needed unless otherwise noted.

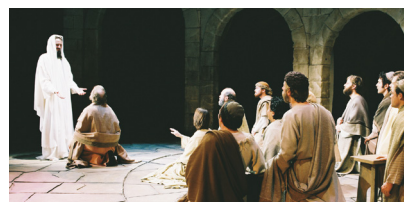
For more information, call 1-801-240-3323. All events are subject to change. For ticketed events, call 1-801-240-0080.

NOVEMBER 2018

Nov 16- Savior of the World

Dec 29 Sacred musical drama depicting events surrounding the Savior's life and His divine mission as the Redeemer of the world.

CCT Tuesdays, 7:30 p.m.; Saturdays, 2:00 and 7:30 p.m.;
ticketed—\$10



NOVEMBER 16–DECEMBER 29

23 Lights on Temple Square Turned On

24 Christmas on Temple Square—Opening Night

Energizing, family-friendly kickoff to the Christmas season. Music provided by a 300-voice choir called *We Also Sing!* under the direction of Merrilee Webb. All ages welcome.

TAB 6:00 and 7:30 p.m.



NOVEMBER 24

Nov 24- On-Going Christmas Performances

Dec 22 Choral and musical groups present free music, carols, and songs of the season in the Assembly Hall, Church Office Building, Church History Museum, Family History Library, Joseph Smith Memorial Building, and North Visitors' Center. For a full listing of times and performers, visit LDS.org/Events. The listings is also available at information and hostess desks throughout Temple Square.



DECEMBER 2

DECEMBER 2018

2 First Presidency Christmas Devotional

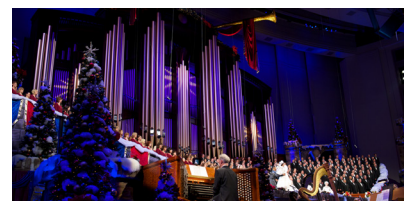
Messages from Church leaders and music from The Tabernacle Choir and Orchestra at Temple Square.

CC 6:00 p.m., *ticketed—free admission*

13-15 Christmas with The Tabernacle Choir

Music from The Tabernacle Choir, Orchestra, and Bells at Temple Square, featuring acclaimed guest singer Kristin Chenoweth.

CC 8:00 p.m., *ticketed—free admission*



DECEMBER 13–15

31 New Year's Eve Celebration on Temple Square

—Family Night Sing-Along: Broadway and the Big Screen

Sing along with some of your favorite, kid-friendly Broadway and movie music with Kelly DeHaan, Jennifer Hohl, and Anne Puzey. All ages welcome.

AH 6:00 p.m.

—Gabriel Trumpets

Trumpets, organ, and percussion performing a broad repertoire for all tastes. All ages welcome.

TAB 6:00 p.m.

—Fiesta!

Award-winning performers from our Latin community—including Alex Melecio, Tony Garcia, and Martha Chavez—celebrating life and new beginnings.

All ages welcome.

TAB 7:00 p.m.

—From Now On! The Best of Movie Musicals

Dallyn Bayless, Mindy Robbins, and the One Voice Children's Choir presenting favorite songs from movie musicals. All ages welcome.

TAB 8:00 p.m.

—Gotta Dance!

The Stratford Street Big Band along with local dance groups performing jazz, swing, and big band favorites. All ages welcome.

JSMB 8:00–10:00 p.m.

JANUARY 2019

12 Utah Youth Symphony Winter Concert

Performance of "The Moldau," by Bedřich Smetana; Danzón no. 2, by Arturo Márquez; and Symphony no. 5, by Ludwig van Beethoven.

TAB 7:30 p.m.

15 *If We Love Him* 2019 Mutual Theme Album Concert

Songs from the 2019 Mutual Theme album performed live by the same young artists who recorded the album.

TAB 7:00 p.m., *ticketed—free admission*

25 BYU Winterfest: Living Legends

Cultural celebration with Latin American, Native American, and Polynesian song and dance.

CCT 7:00 p.m., *ticketed—\$12*

26 UMEA Honor Choirs

The Utah Music Educators Association's concert featuring top choral students from Utah schools.

TAB 2:00 and 7:30 p.m.



JANUARY 25

FEBRUARY 2019

2,6

BYU Winterfest: Vocal Point

Stunning, high-energy male a cappella performance.

CCT Saturday, 2:00 and 7:00 p.m.; Wednesday, 7:00 p.m.;
ticketed—\$12

8

BYU Winterfest: International Folk Ensemble's *Journey*

Dances from various cultures and music by live performance band Mountain Strings.

CCT 7:00 p.m., *ticketed—\$12*

9

Utah Premier Brass

Utah's only British brass band, capable of playing whisper soft passages and powerful fortissimos and showcasing a breadth of musical styles.

AH 7:30 p.m.

15-16

BYU Winterfest: Ballroom Dance Company's *Swing 'n' Sway*

Energetic ballroom dances and rhythmic Latin dances.

CCT Friday, 7:00 p.m.; Saturday, 2:00 and 7:00 p.m.; *ticketed—\$12*

22

Spring Church Music Festival

An evening of original music and lyrics by Church members from around the world. Performances will feature award-winning music from the 2018 Church Music Submission.

AH 7:30 p.m.

23

World Beloved Bluegrass Mass

Mass settings from a variety of genres performed by the Amavi Chorale, with Sonja Poulter directing.

AH 7:30 p.m.

23

BYU Winterfest: Young Ambassadors' *Welcome Home*

Singers, dancers, and a 10-piece band performing international hits and popular Broadway show tunes.

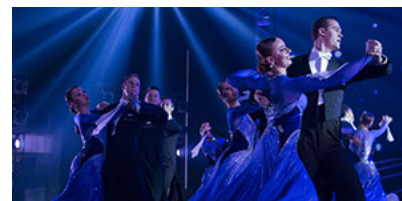
CCT 2:00 and 7:00 p.m., *ticketed—\$12*



FEBRUARY 2, 6



FEBRUARY 8



FEBRUARY 15-16



FEBRUARY 23

ONGOING EVENTS

For schedule exceptions or to obtain further information about the following events, please visit www.TheTabernacleChoir.org.

- **The Tabernacle Choir at Temple Square rehearsals** are held on Thursday evenings from 7:30 to 9:30 p.m. in the Tabernacle on Temple Square. Choir rehearsals are free and open to the public. For the month of December rehearsals are held in the Conference Center.
- **Bells on Temple Square rehearsals** are held on Wednesday evenings at 7:30 p.m. in the Tabernacle on Temple Square. Doors open 10 minutes before rehearsals. Bells on Temple Square is a 32-member hand bell ringing ensemble and part of the The Tabernacle Choir organization. No rehearsals will be held December 12, 19, and 26.
- **Music and the Spoken Word broadcasts** by The Tabernacle Choir and Orchestra at Temple Square are held on Sunday mornings at 9:30 a.m. Broadcasts are free and open to everyone eight years of age and older. Doors open at 8:30 a.m., and guests are asked to be seated by 9:15 a.m. for the 30-minute performance. Though regularly held in the Tabernacle, December broadcasts will be from the Conference Center on Temple Square.
- **Organ recitals** are performed for 30 minutes in the Tabernacle Monday-Saturday at 12:00 noon and Sundays at 2:00 p.m.

Parking and Ticket Information

Parking Information

- Parking lots fill quickly, and parking is not guaranteed.
- The Joseph Smith Memorial Building parking facility is primarily reserved for patrons of Temple Square Hospitality restaurants. Using this lot for other events incurs a \$10 charge.
- The Conference Center parking facility is primarily reserved for patrons of the Salt Lake Temple. Using this lot for other events incurs a \$10 charge.
- Street parking is available in downtown Salt Lake City surrounding Temple Square. Visit parkingslc.com and download the app for up-to-date parking availability and rates.

UTA Trax and Other Salt Lake City Parking

We recommend that guests use the UTA Trax and bus systems wherever possible. Using these public systems reduces traffic congestion downtown, eliminates the need to find parking, and ensures a more timely arrival to your destination. Visit rideuta.com for more information about planning your trip downtown.

Temple Square Events Ticket Office

Located at door 4 of the Conference Center, the ticket office can assist patrons in obtaining tickets for events on Temple Square.

Office hours: Monday–Friday, 9:00 a.m.–4:00 p.m.

Temple Square Events Ticket Office

Conference Center 60 West North Temple Street Salt Lake City, UT 84150

1-801-570-0080

1-866-537-8457 (1-866-LDS-TIKS)

For all other inquiries regarding the Conference Center, please call 1-801-240-0075.

Guidelines for Temple Square and Conference Center Events

- **Age for Admittance:** Children under eight years of age will only be admitted to events specifically designated for family members of all ages.
- **American Sign Language (ASL) Interpretation:** Interpretation by an ASL interpreter may be arranged for a specific event. Patrons who require this service should inform the ticket office two weeks prior to the event.
- **Assistance for Hearing Impaired:** A limited number of assisted-listening devices are available in all buildings. Patrons who require such devices should inform an usher when they arrive at the event.
- **Cameras, Audio, and Video Recorders:** Patrons may not bring cameras or audio or video recording devices into performance halls. Photographs are not permitted during the event.
- **Dress Standard:** With the exception of concerts in the park, business dress is encouraged.
- **Electronic Devices:** Patrons should turn off cell phones and other electronic devices during the event.
- **Food and Beverages:** Food and beverages are not permitted in performance halls. Water is allowed in clear, plastic water bottles only.
- **Packages and Backpacks:** Patrons may not bring packages or backpacks into performance halls.

- **Seating:** For events on Temple Square, patron seating begins one hour prior to the scheduled event. For events in the Conference Center, seating begins 90 minutes prior to the event. Those with tickets should be in their seats 30 minutes prior to the event. Standby seating is available on a first-come, first-served basis for ticketed events. The standby line will form at the north gate of Temple Square.
- **Wheelchair-Accessible Seating:** Limited wheelchair-accessible seating is available in all buildings. Patrons who require such seating should inform the ticket office when they obtain tickets or an usher when they arrive at the event. Patrons who enter the building in a wheelchair should remain in their wheelchair for seating during the event.
- **Weapons:** Weapons are not allowed on Church property.